



Strategic Reviews, Development and Execution

HSE Global provides support for strategy reviews, development, and execution including establishing and supporting steering and governance committees, facilitating roadmap workshops, facilitating programs such as stakeholder engagement sessions to ensure operational ownership, executive and leadership coaching, and development of assurance programs to support due diligence requirements.

HSE Global has assisted hundreds of national and global organisations develop and implement HSE and Wellbeing strategies resulting in significant and sustained improvements including:

- Substantial improvements in safety results and performance (+80%)
- Shifting organisational focus from output performance to input performance
- Aligning executives and front-line workers on a single vision and driving effective plan execution.
- Developing safety leadership capability and enabling thousands of front-line workers to become front-line safety leaders

Why is this important?

The majority of strategies fail not because they were wrong but because organisations failed to execute the strategy!

72% of strategies **FAIL** due to poor execution.

An effective HSE strategy and plan, supported by high performing leaders demonstrating genuine care, will hold people accountable, meet due diligence requirements and help focus the Board on proactive and critical performance measures.

How can organisations improve

- Understand the impact that a poorly executed HSE strategy can have on culture.
- Ensure that all stakeholders are focussed and aligned on a single health and safety strategy.
- Challenge results, why are you getting your current safety performance? Is it through good leadership and planning, or luck?
- Use industry experts to help diagnose the current effectiveness of your strategy and execution at ALL levels of your organisation (What's working/Not Working).



Making a Difference Every Day

Helping our customers make a difference

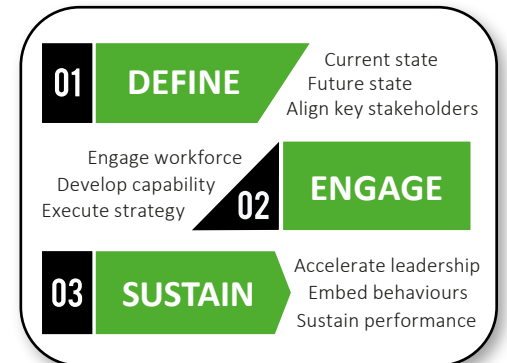
HSE Global uses a tailored three phased approach:

Phase 1: Define an organisations current and future state safety performance and culture including reviewing the current health, safety, and wellbeing strategy.

Phase 2: Engage the workforce to develop capabilities required to execute the future state strategy.

Phase 3: Sustain ongoing performance through coaching, ensuring behaviours are embedded, measured and continuously improved.

Cultural Transformation Model



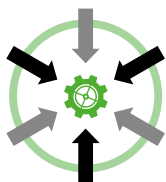
Developing your health, safety, and wellbeing strategy?

HSE Global will spend time in your business conducting an ethnographic study that uses our established integral model to identify how individuals and groups influence leadership, behaviours, sub-cultures, and systems & structures. The findings of the study are used to highlight strengths, weaknesses, threats, and opportunities and form the strategic roadmap to help move an organisation to their desired future state goals.

Reviewing your current health, safety and wellbeing strategy

Where you have an existing strategy, HSE Global will review for alignment and understanding from executive level through to operations and benchmark performance. This review will look at the effectiveness of the programs and how they are being implemented, monitored, and measured for the purpose of providing independent assurance that the strategy is aligned to the needs of the business and is maximising operational efficiency and return on investment.

HSE Global's strategy execution methodology follow a three phased approach creates...



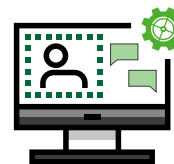
FOCUS

We are focused on our strategy.



ALIGNMENT

We are aligned across and at every level of the business.



DISCIPLINE

We are disciplined with our implementation, risk control effectiveness, behaviours and processes.

For more information:

To organise a meeting to discuss your specific requirements, please contact us.

Australia

+61 2 7228 7914

Info@hseglobal.com.au

New Zealand

+64 21 300 103

Info@hseglobal.co.nz

United States

+1 (907) 231 0571

Info@hseglobal.us

Making a Difference Every Day